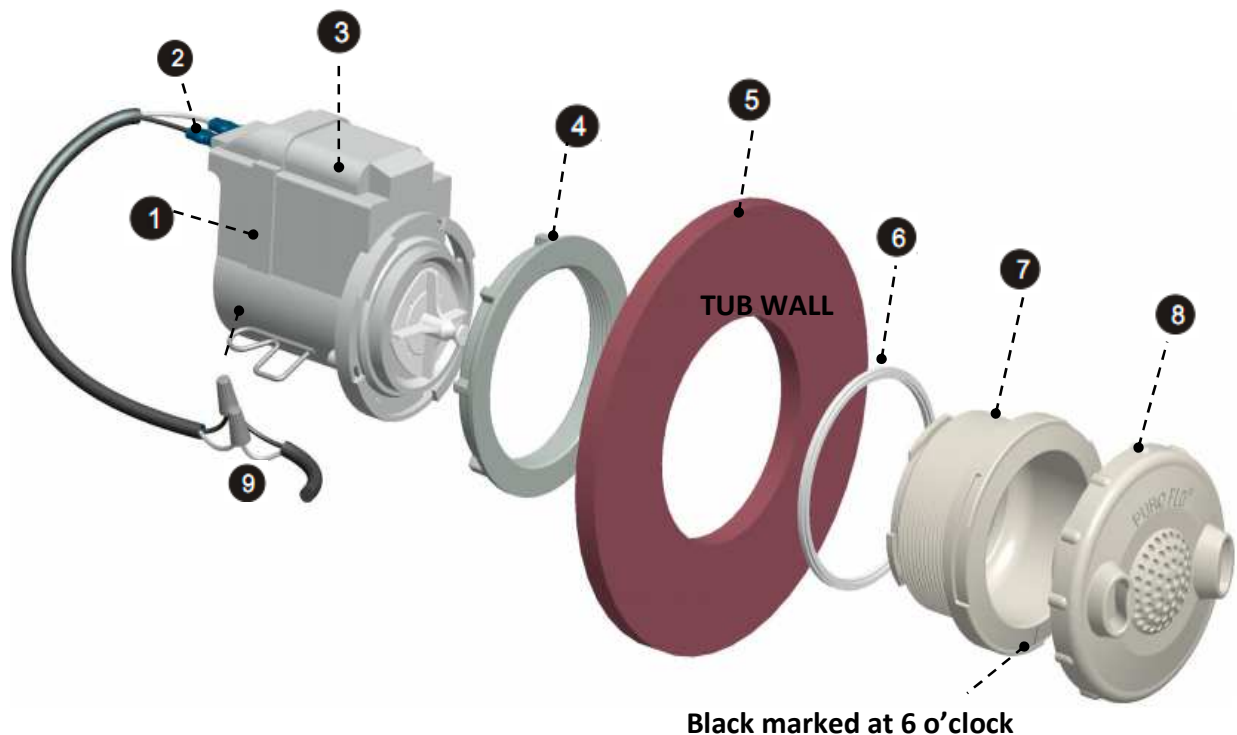


## HOW TO REPLACE PURE-FLO JET WITH MAGNETIC JET



1. **Disconnect AC power to Spa**
2. **>>> Safety precaution needed** : Loosen the plumbing as needed and lift the front Spa off the floor by 1'
3. Pull out the Lock pin (#1). Remove your Magnetic Jet by turning clock wise. *Cut & strip the AC power cord. Remove capacitor (black block) NO GREEN WIRE NEEDED as shown at (#9).*
4. At the Tub-wall :
  - 4.1 If there is a rubber seal still stick on Tub wall (#6). Do not remove. We will reuse this rubber seal. It is easier and faster to install the Pure-Flo Jet this way; then you will need to remove the seal (#6) from the housing (#7)
  - 4.2 If the rubber seal on the wall was damaged. Clean the Tub wall and apply a good amount of silicon onto the housing (#7).
5. Place the Pure-Flo housing onto Tub wall. **NOTE** : Black marked on housing must be **at 6 o'clock**
6. At the back of Tub. Using mounting nut (#4) to secure the jet housing. Do not over tight.
7. At Jet-Motor : plug in the Ac Power fast on connector and at the other end of the cable; connect AC power as show at (#9)
8. Turn on AC power to spa. Fill water, check for leak before running the new Pureflo